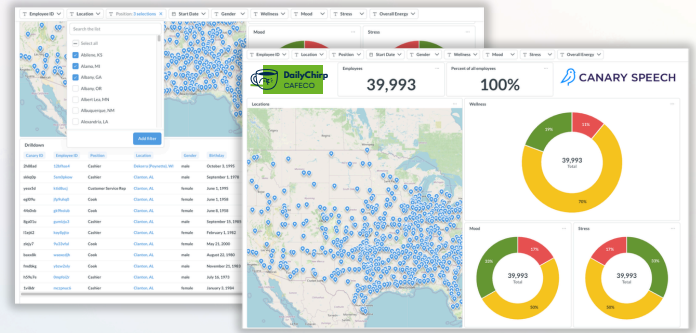


Aerolytx Wellness Powered by Canary Speech

Objective Mental Wellness Insights

Aerolytx Wellness enables organizations to proactively monitor anxiety, stress, and burnout across their workforce using simple voice check-ins.



The Challenge

Employee burnout and stress are rising, yet most wellness programs rely on subjective surveys, self-reporting, or lagging indicators like absenteeism and turnover.

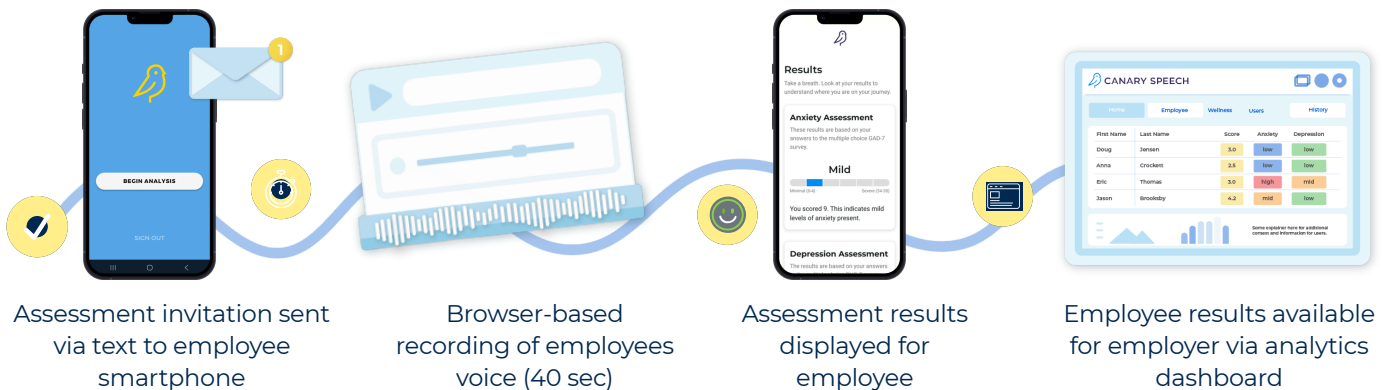


Wellness Intelligence at Scale

Aerolytx powered by Canary Speech uses clinically validated vocal biomarkers to detect stress, mood, and energy to provide an overall wellness score in real time –without surveys, wearables, or disruption to daily workflows.

- Objective mental wellness insights
- Non-intrusive, voice-based check-ins
- Rapid deployment at scale
- Secure, organization-wide management platform

How it Works



Platform & Capabilities

- Real-time workforce wellness trends
- Views by department, manager, or employee
- Early burnout risk identification
- Progress tracking over time
- Easy to white label or integrate into internal systems
- Expandable to multi-model wellness signals (sleep, activity, & more)
- HIPAA Compliant
- Microsoft certified partner

Workforce Outcomes

- Reduced burnout and attrition
- Improved productivity and engagement
- Data-driven wellness strategy
- Faster ROI than traditional wellness programs

Want to learn more?
 Email info@aerolytx.ai